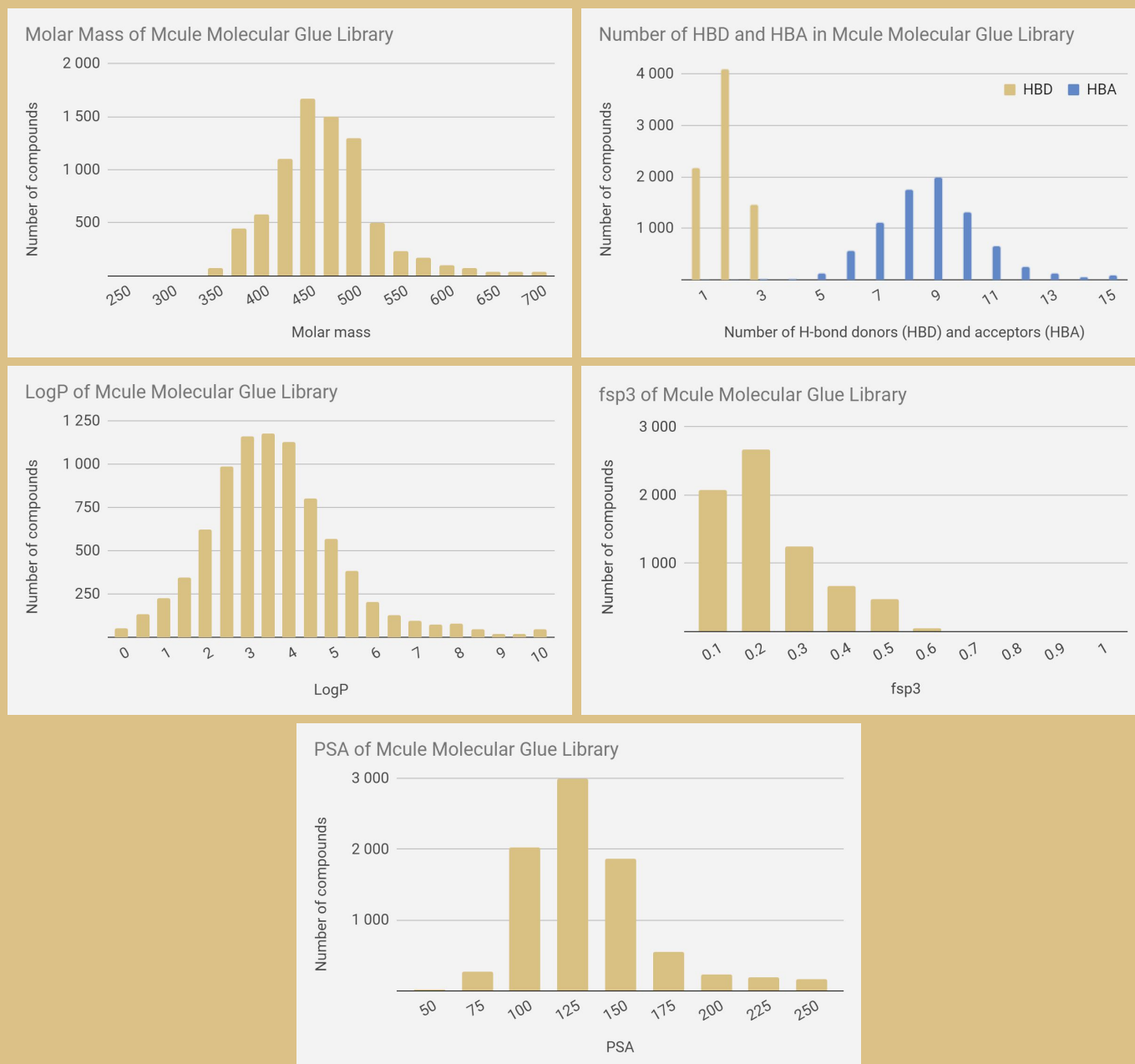


MCULE MOLECULAR GLUE LIBRARY

THE MCULE MOLECULAR GLUE LIBRARY WAS ESTABLISHED TO AID RESEARCHERS LOOKING FOR INDUCED APOPTOSIS OF VARIOUS PROTEINS OF INTEREST VIA MOLECULAR GLUES AND E3 LIGASES.

- E3 binders were collected from the [PROTAC-DB](#), and substructure search was performed accordingly.
- Derivatives of each proven E3 ligand with at least 6 additional heavy atoms (second binding site) were included in the library. This is to ensure the possibility of binding to the protein of interest while maintaining preferable physicochemical properties.

Physicochemical property distributions of the Mcule Molecular Glue Library



Click [here](#) to access the downloadable data file of Mcule Molecular Glue Library. Here, you can find the SMI.GZ files for both the full and in stock collections, provided separately. The SMI.GZ files contain the molecules in SMILES format (SMILES ID). If you would prefer other molecular format or further filtering contact us at support@mcule.com.

Additionally, our professional laboratory services include:

- Transferring samples to plates/vials as solid or DMSO solution,
- Solubility characterization,
- Temperature controlled shipping,
- Quality control via LC-MS & NMR (on demand).

Please also reach out to our cheminformatics experts with projects related to

- Screening library building/expansion,
- Generation of synthetically feasible chemical spaces based on your building blocks,
- Filtering the Mcule database based on your criteria.

Mcule's Custom Solution Experts are ready to guide you through the selection and ordering process free of charge! If you have any questions or need any help, please feel free to contact us at support@mcule.com.